

18TH MIDGET

Quick Start Guide/Instruction Manual

Before operating this model, please read this entire Quick Start Guide/Instruction Manual and all printed materials related to this model. Read and follow all warnings and precautions. Failure to follow all warnings and precautions while operating this model could result in personal and/or property damage.



SAFETY PRECAUTIONS

- THIS RADIO CONTROLLED RACING CAR IS NOT A TOY!
- THIS HIGH-PERFORMANCE R/C MODEL IS RECOMMENDED FOR AGES 14 AND OLDER.
- THIS IS ONLY FOR YOUR REFERENCE BEFORE YOU OPERATE THE MODEL CAR.
- PLEASE DO NOT CHANGE THE EQUIPMENT OF THE BRUSHLESS ESC, MOTOR AND BATTERY CASUALLY. WE WILL NOT TAKE ANY CHARGE OF THE DAMAGES OR INJURIES CAUSED BY YOUR CHANGES!
- ASSEMBLE THIS KIT ONLY IN PLACES OUT OF CHILDREN'S REACH!
- TAKE ENOUGH SAFETY PRECAUTIONS PRIOR TO OPERATING THIS MODEL. YOU ARE RESPONSIBLE FOR THIS MODEL'S ASSEMBLY AND SAFE OPERATION!



#1RC1000

#1RC1001



FIND AND FOLLOW
US HERE



WWW.1RC-RACING.COM
E-mail—support@1rc-racing.com

900-0001 Rev A

Safety Precautions and Warnings

Please read all warnings and precautions in this Quick Start Guide/Instruction Manual along with any other documentation provided for this model. Failure to operate your model in a responsible and safe manor may result in personal property damage and/or personal injury. As the user of this model, you are solely responsible for operating the model in a safe manor. 1 RC Racing, LLC shall not be liable for any loss or damages, direct, indirect, special, incidental, or consequential that occurs during the use, misuse, or abuse of this vehicle or any product required to operate it.

- This radio controlled racing car is not a toy!
- This high-performance R/C model is recommended for ages 14 and older.
- This is only for your reference before you operate the model car.
- Please do not change the equipment of the brushless ESC, motor and battery casually, we will not take any charge of the damages or injuries caused by your changes!
- Assemble the kit only in places out of reach of children's reach!
- Take enough safety precautions prior to operating this model. You are responsible for this models assembly and safe operation.
- This model contains many small parts that could cause a choking hazard, keep all part away from children.
- This model is intended for track use only, this model is not intended for off-road use. Track surface should be smooth with minimal bumps.
- Never operate your model with low transmitter and/or model batteries.
- This model is controlled by a radio signal that could be subject to interference from many sources outside your control. This interference may result in the loss of control so ensure you as the operator of this model always keep some distance in all directions around your model as a safety margin to avoid personal and/or property damage to you and others in the area.
- Never operate your model in a public street or congested area and always keep away from cars, traffic and crowds of people.
- Never operate your model at night or anytime line of sight may be obstructed or impaired in any way.
- This model is small so ensure you run your model in a non crowded area so nobody trips on model.
- This model is small and could be a trip hazard, ensure you only run the car in a safe area.
- This model is not waterproof, ensure vehicle is not run in wet conditions.
- Always turn on your transmitter first, then model.
- Do not put fingers on or near any moving part, this may result in serious injury or damage model.
- After running model, NEVER touch items like motor, battery, or electronic speed control as these items may be hot and result in serious injury as they may generate high temperatures during operation.
- When you are done using model, turn off model first, then transmitter.
- Never store model with battery installed or plugged in, always ensure battery is unplugged and removed before storage. Store battery in safe place.
- Some details and images in this manual might not exactly reflect the items you find in you model box.

Table of Contents

Safety Precautions and Warning and Contents	2-3
Quick Start	4
Battery Charging	4-5
Battery Installation	5
Transmitter Operation and ESC/Rx Tuning	6-8
Troubleshooting	9
Replacement Parts Listing and Exploded Views	10-12
Set-up Tips and Notes	13
Limited Warranty and Service Contact Info and Regs	14



Contents

- 18th Scale Midget
- Transmitter
- Battery (for model)
- Battery Charger (for model battery only)
- 4 AAA Batteries (for transmitter)
- L - Allen Wrench
- Nut Driver
- Manual and Sticker Sheet
- Bind Plug (not shown in image due to small size)



Quick Start

Before operating your model, please read entire manual to ensure you have complete understanding how to operate and control vehicle.

1. Read all safety precautions and warnings in this manual.
2. Charge the model battery as described below. Read all safety precautions and warnings about charging battery.
3. Install AAA batteries in transmitter as described on the next page of this manual. Only use alkaline batteries in transmitter.
4. After model battery is fully charged, ensure switch is in off position on model and then install model battery as detailed below in this manual.
5. Turn on transmitter and then with model in safe location away from others, turn on model. Wait at least 5 seconds for transmitter and model to bind together.
6. Ensure steering and throttle is working correct and ensure steering is moving front tires in correct directions.
7. Drive model while adhering to all safety precautions and warnings detailed in this Quick Start Guide/Instruction Manual.
8. When you are done using model, turn off model first, then transmitter, then remove battery from model and store in safe location before next use. NEVER store battery in model.

Safety Data—NiMh Battery



WARNING: USER MUST READ AND FOLLOW ALL INSTRUCTIONS AND WARNINGS AND PRECAUTIONS.



WARNING: This battery is not a toy and care should be taken when handling and charging the battery. Failure to do so could result in serious injury to user and others in the area. Details listed below must be followed to ensure no harm is done to persons



Handling and Storage

- Never drop battery.
- Never alter battery in any way.
- Never puncture battery.
- Never short circuit battery by connecting terminals.
- Never leave battery in model.
- Never leave battery connected to model or charger after use
- Always store battery in dry cool location.
- Always store battery in safe battery storage bag.
- Keep battery away from water.

Charging Battery

- Always make sure battery is not damaged before charging.
- Only use charger that is specifically designed for battery.
- Refer to charger instructions for charging details.
- Never charge a battery that is hot to the touch.
- Remove battery from charger if battery becomes hot to the touch.

Safety

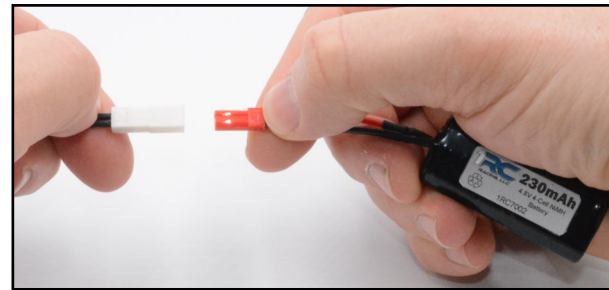
1 RC Racing, LLC is not liable for the misuse or mistreatment of this battery, all warnings and precautions must be followed to ensure safe use. In the event a battery becomes hot to the touch or starts to smoke or outer covering starts to melt while charging/running or you see any change in the battery condition, remove battery from charger or model and then safely move battery to a safe location in open outside air away from any persons and property. Leave battery in outside open area for at least 2 hours to allow battery to cool and stabilize. Once battery has cooled and is no longer a danger, store battery in plastic sealed container to eliminate any shorting and then battery must be recycled. Do not store battery with other waste. Call your local recycling center for information on battery recycling in your area. Handle any damaged battery with great care, batteries are corrosive so ensure damage batteries and its contents never contact skin in any way. If skin comes in contact with damaged battery, immediately wash the affected area with soap and contact medical care if additional care is needed. If damaged battery or its contents contact your eyes in any way, wash with water for at least 15 minutes and then contact medical care immediately.

Battery Charging

Caution: Always remove the battery from the model before charging, **NEVER** charge the battery in the model. Always use charger that came with model to charge model battery. Never store battery in model when not in use, always store battery in safe place when not in use. Never plug battery in backwards to charger or model or damage will occur. Always avoid contact with water or other liquids.



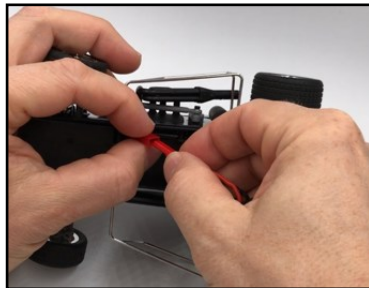
Step 1 - Plug in Wall Charger



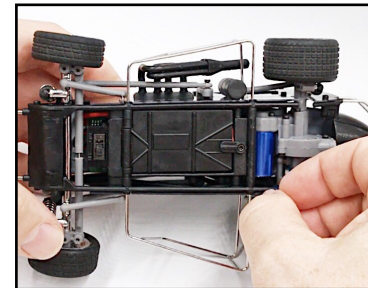
Step 2 - Connect Battery to Charger

Battery Installation

Caution: Never store battery in model when not in use, always store battery in safe place when not in use. Never plug battery in backwards to charger or model or damage will occur. Always avoid contact with water or other liquids. Always remove the battery from the model before charging, **NEVER** charge the battery in the model. After battery is installed in model, ensure lock tab on battery box is fully locked to ensure battery does not come out of model.



Step 1 - Plug Battery into Model



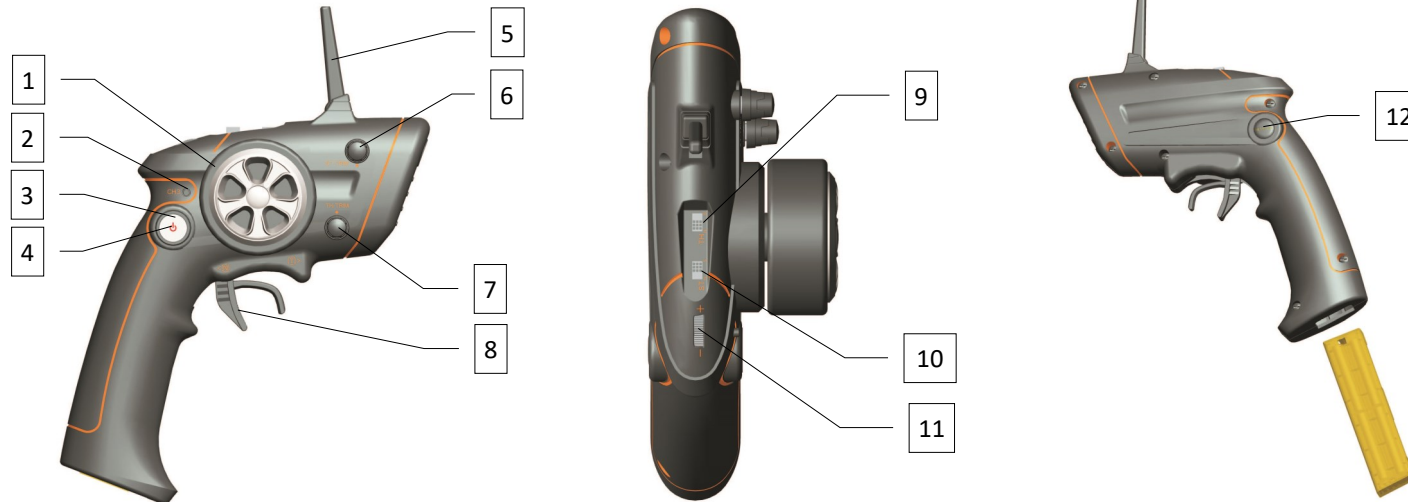
Step 2 - Close Battery Door

Transmitter Operation

Caution: Never hold the trigger when turning on transmitter. Ensure you understand all features of transmitter before using. Do not drop transmitter or damage can occur.

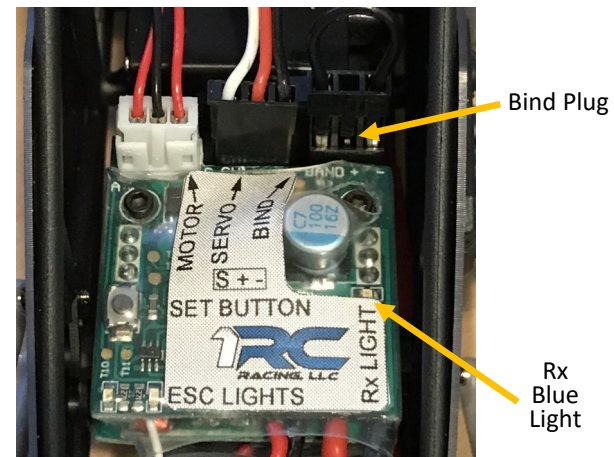
Transmitter Features

1. **Steering Wheel:** Controls direction of model (left/right).
2. **Optional 3rd Channel:** Activates 3rd channel, not used unless noted in instruction manual.
3. **On/Off Switch:** Turns transmitter on and off.
4. **Indicator Light:** Indicates if transmitter is on or off.
5. **Antenna:** Transmits signal to model.
6. **Steering Trim:** Adjusts the centering of the models front tires.
7. **Throttle Trim:** Adjusts the motors speed when trigger is at neutral position.
8. **Trigger:** Controls speed and direction of model (forward /brake).
9. **Throttle Reverse:** Switch that will reverse the direction of the motor when trigger is moved.
10. **Steering Reverse:** Switch that will reverse the direction of steering servo.
11. **Dual Rate:** Adjusts the amount the models front tires turn front right to left.
12. **Battery Tray Release Button:** Releases battery tray from bottom of radio.



Binding Transmitter to Model

1. Ensure battery is installed and connected to model and secured in battery tray area. Ensure battery is connected correctly or damage can occur to ESC/Rx unit.
2. Remove hood on model so you have full access to ESC/Rx unit.
3. Ensure car is elevated off ground so tires are not touching ground, this will prevent any damage if car starts to move during binding process.
4. Turn on transmitter.
5. Turn on model using the switch just behind the front axle from underside of model.
6. Plug in Bind Plug to bind port as shown in image to the right. Plug can be installed in either direction, there is no polarity to the bind plug.
7. The Rx Blue light will start to flash after bind plug is installed.
8. Watch for blue light to stop flashing and go solid blue.
9. After blue light stays solid (no flashing), blue light will then again start to flash, when it does remove bind plug.
10. Blue light will flash briefly after plug is removed and then blue light will go solid, this means the Tx and Rx are now bound and model is ready to use.
11. Ensure steering and throttle works correct, make adjustment to transmitter to ensure steering is moving correct direction and is straight and car does not move when trigger is in neutral position.
12. If steering and throttle do not work, go back to step 1 and repeat steps 1-11.



ESC (Electronic Speed Control)



WARNINGS

- USER MUST READ AND FOLLOW ALL INSTRUCTIONS AND WARNINGS AND PRECAUTIONS.
- ENSURE ALL WIRES AND CONNECTIONS ARE WELL INSULATED BEFORE CONNECTING THE ESC/Rx TO RELATED DEVICES, AS SHORT CIRCUIT WILL DAMAGE THE ESC/Rx.
- ENSURE ALL DEVICES ARE WELL CONNECTED TO PREVENT POOR CONNECTION THAT MAY CAUSE YOUR VEHICLE TO LOSE CONTROL OR OTHER UNPREDICATABLE ISSUES SUCH AS DAMAGE TO THE DEVICE.
- STOP USING THE ESC WHEN IT TEMPERATURE EXCEEDS 90°C/194°F, OTHERWISE YOUR ESC/Rx WILL BE DAMAGED AND MAY ALSO DAMAGE YOUR MOTOR. WE ALWAYS RECOMMEND SETTING THE "OVER HEAT WARNING" TO "ENABLED" TO ENSURE DAMAGE DOES NOT OCCUR TO YOUR ESC/Rx UNIT.
- ALWAYS DISCONNECT THE BATTERIES AFTER USE, AS THE ESC WILL CONTINUE TO CONSUME CURRENT IF IT'S CONNECTED TO BATTERIES (even if the esc is turned off). LONG-TIME CONNNECTION WILL CAUSE BATTERY TO COMPLETELY DISCHARGE AND RESULT IN DAMAGE TO BATTERIES AND/OR ESC. THIS WILL NOT BE COVERED UNDER WARRENTY.

Setting ESC

1. Ensure battery is installed and ensure battery is connected to model and secured in battery tray area. Ensure battery is connected correctly or damage can occur to ESC/Rx unit.
2. Remove hood on model so you have full access to ESC/Rx unit.
3. Ensure car is elevated off ground so tires are not touching ground, this will prevent any damage if car starts to move during binding process.
4. On transmitter, make sure the throttle trim knob is turned clockwise until it stops and ensure steering trim knob is center in its rotation, then turn on transmitter.
5. Hold ESC Set Button down while you turn on the model using the switch just behind the front axle from underside of model.
6. When ESC Red Light starts to flash, release the Set Button, ESC is now in setup mode.
7. With trigger on radio in neutral position, press Set Button one(1) time, ESC Red Light will stop flashing, this confirms the neutral position.
8. Now pull trigger to full throttle on transmitter and press Set Button again, ESC Green Light will flash twice to confirm full throttle setting, hold trigger in full throttle until light stops flashing.
9. Now push trigger to full brake on transmitter and press Set Button again, ESC Green Light will flash three time to confirm full brake setting, hold trigger in full brake until light stops flashing.
10. Return trigger on transmitter to neutral and ESC Green Light will brink one time. Your ESC and now set.
11. Ensure steering and throttle works correct, make adjustment to transmitter throttle trim knob so motor does not move when trigger on transmitter is in neutral position.
12. Ensure ESC it reaching full throttle, pull trigger to full throttle and ESC Green Light should go solid if full throttle is reached.
13. If steering and throttle do not work correct, go back to step 1 and repeat steps 1-12.

LED LIGHT STATUS—During Startup

- RED LED keeps flashing rapidly indicating ESC does not detect correct throttle signal/neutral value stored in ESC that match Radio setting. Rotate Throttle Trim knob on radio until light stops flashing.

LED LIGHT STATUS—During Operation

- RED & GREEN LED's die out when throttle trigger is in throttle neutral zone.
- RED LED turns solid when your vehicle starts to run forward, GREEN LED will also come on when pulling trigger to full (100%) throttle.
- RED LED turns solid when you apply brake.
- RED LED turn solid when you reverse your vehicle.

LED LIGHT STATU—Protection Warnings

- RED LED flashes a short single flashes that repeats 3 times indicating low voltage cutoff protection is activated.
- GREEN LED flashed in short single flashes that repeats 3 times indicating the ESC thermal/overheat protection is activated.

This ESC unit has advanced settings that can be adjusted. Visit www.1RC-Racing.com for further details on how these settings can be adjusted.



ESC Set
Button

ESC Red
Light

ESC Green
Light

Troubleshooting

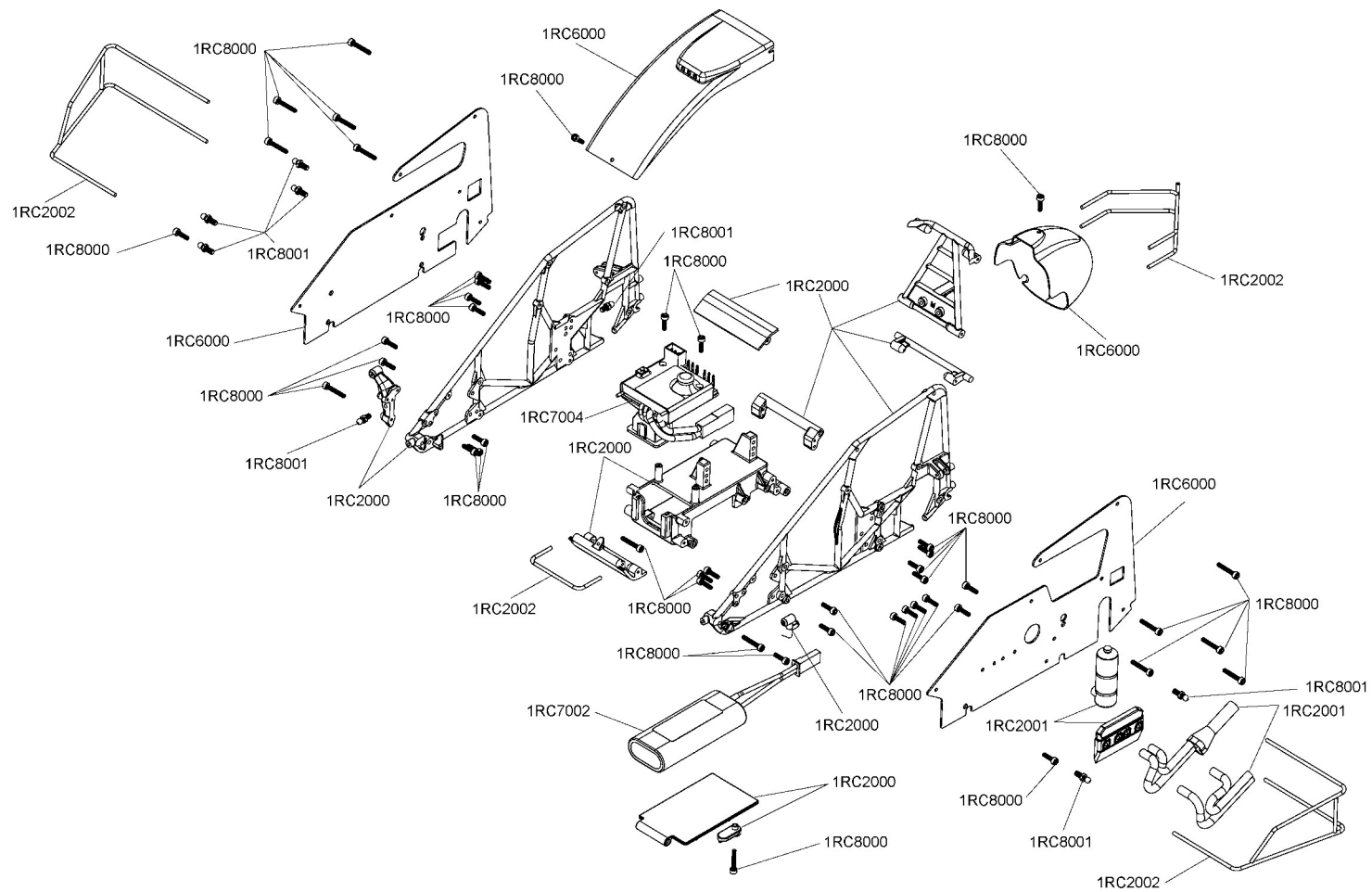
Description	Problem	Solution
Model has no power	Switch is not on	Turn transmitter and model switch on
	Battery is not charged	Charge battery
	Battery not plugged in	Plug in battery
	ESC/Rx failure	Replace ESC/Rx
	Tx not bound to Rx	Re-bind Tx to Rx
	Transmitter failure	Replace transmitter
Steering Servo does not work	Servo not plugged in	Plug servo into ESC/Rx unit
	Steering linkage bound up	Free up steering linkage
	Can hear servo moving but wheels do not turn	Check servo saver and linkage from servo to front tires
	Servo failure	Replace servo
Car does not move when pulling throttle trigger on transmitter	Motor not plugged in	Plug motor in
	ESC out of adjustment	Reset ESC
	Wire unsoldered from motor	Re-solder wire to motor
	Motor Failure	Replace motor
Steering	Wheels turn wrong direction	Flip steering reverse switch on transmitter
	Servo gears damaged	Replace servo
Throttle	Car goes backward when pulling trigger on transmitter	Flip throttle reverse switch on transmitter then reset ESC
	No reverse	Reset ESC
	No brakes	Reset ESC
	Motor runs but car does not	Check all gears in transmission for damage
Model slows or stops while running	ESC/Rx overheating	Turn model off and let ESC cool down
	Motor overheating	Turn model off and let motor cool down
	Battery losing charge	Charge battery
	Tx not bound to Rx	Re-bind Tx to Rx
	Gear train bound up	Free gear train of obstructions
Model glitching	Transmitter batteries low	Replace transmitter batteries
	Model battery low	Charge model battery
	Loose wires	Check all wires on model

Replacement Parts

1RC1000	1/18 Midget, Red, RTR	1RC5501	RR Tires & Wheels, Silver Chrome, 1/18 Midget (2)
1RC1001	1/18 Midget, Black, RTR	1RC6000	Body & Driver, Clear, 1/18 Midget
1RC2000	Frame, 1/18 Midget	1RC7000	7915kv Brushless Motor & 12T Pinion, 1/18 Midget
1RC2001	T-Type Engine, Header, Oil Tank, 1/18 Midget	1RC7001	Steering Servo, 1/18 Midget
1RC2002	Nerf Bars, 1/18 Midget	1RC7002	NiMH Battery, 4 Cell NiMh, 4.8V, 220mAH, 1/18 Midget
1RC3000	Rear End, 1/18 Midget	1RC7004	ESC/Rx, 1/18 Midget
1RC3001	FR Spindles & Servo Saver, 1/18 Midget	1RC8000	Hardware Set, 1/18 Midget
1RC3002	Radius Rods, 1/18 Midget	1RC8001	Ball Stud & Pivot Ball Set, 1/18 Midget
1RC3006	Front Axle, 1/18 Midget	1RC8502	Roll Pin Set, 1/18 Midget (8)
1RC4000	Rear Axle & Compound Gear, 1/18 Midget	1RC8500	Bushing Set, 1/18 Midget (8)
1RC5000	Shock Set, 1/18 Midget (4)	1RC8800	Nut Driver & L-Wrench Set, 1/18 Midget
1RC5001	Spring Kit, 1/18 Midget (12)	1RC9000	Sticker Sheet, 1/18 Midget
1RC5500	FR Tires & Wheels, Silver Chrome, 1/18 Midget (2)		

Option Parts

1RC3003	Alum FR Spindles & Kingpin Set, 1/18 Midget	1RC5512	FR Tires & Alum Wheels, Silver, 1/18 Midget (2)
1RC3004	Torsion Bar Mount Assy, 1/18 Midget	1RC5513	RR Tires & Alum Wheels, Silver, 1/18 Midget (2)
1RC3005	Alum Pitman Arm, Servo Saver, 1/18 Midget	1RC5514	FR Tires & Alum Wheels, Black, 1/18 Midget (2)
1RC4002	Alum Rear Wheel Hex, 1/18 Midget (2)	1RC5515	RR Tires & Alum Wheels, Black, 1/18 Midget (2)
1RC5002	Alum Shock Set, 1/18 Midget (4)	1RC6004	Alum Muffler, 1/18 Midget
1RC5504	FR Tires & Wheels, Black, 1/18 Midget (2)	1RC6005	Alum Oil Tank, Silver, 1/18 Midget
1RC5505	RR Tires & Wheels, Black, 1/18 Midget (2)	1RC8501	Bearing Set, 1/18 Midget (8)



Set-Up Tips

Not Enough Steering on Corner Entry	Turn up dual rate on radio
	Less tension on right front spring
To Much Steering on Corner Entry	Turn down dual rate on radio
	More tension on right front spring
Not Enough Steering on Corner Exit	Turn up dual rate on radio
	More tension on right rear spring
To Much Steering on Corner Entry	Turn down dual rate on radio
	Less tension on right rear spring

Notes

Limited Warranty and Service Contact Information

Limited Warranty

1 RC Racing, LLC warrants the model and its components to be free of defects in material and workmanship at the date of purchase to the original purchaser, warranty is not transferable.

Limitation of Liability

1 RC RACING, LLC SHALL NOT BE LIABLE FOR SPECIAL, INDIRECT, INCIDENTAL OR CONSEQUENTIAL DAMAGES, LOSS OF PROFITS OR PRODUCTION OR COMMERCIAL LOSS IN ANY WAY, REGARDLESS OF WHETHER SUCH CLAIM IS BASED IN CONTRACT, WARRANTY, TORT, NEGLIGENCE, STRICT LIABILITY OR ANY OTHER THEORY OF LIABILITY, EVEN IF 1 RC RACING, LLC HAS BEEN ADVISED OF THE POSSIBILITY OF SUCH DAMAGES.

Service Contact Information

All service/warranty requests should be sent to support@1RC-Racing.com and should contain the following information.

1. Name and shipping address and contact info
2. Picture of part(s) in question
3. Description of running condition when part broke

All warranties will be reviewed and an email will be sent back within 2-5 days with details of the warranty.

Regulation Statements



FCC Compliance

This device complies with part 15 of the FCC rules. Operation is subject to the following two conditions: (1) This device may not cause harmful interference, and (2) this device must accept any interference received, including interference that may cause undesired operation. The user is cautioned that changes or modifications not expressly approved by the party responsible for compliance could void the user's authority to operate the equipment.



Battery Recycling (USA)

Product must not be disposed with other waste. Call 1-800-8-228-8379 for information on battery recycling in your area.



1 RC Racing, LLC
www.1RC-Racing.com
support@1RC-Racing.com